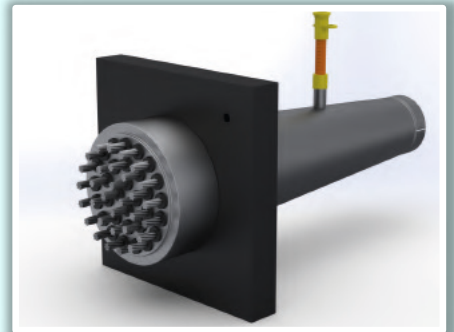
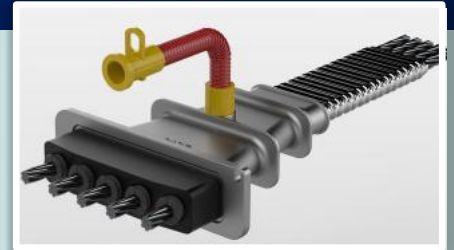


# SARE GLOBAL POSTTENSION SYSTEMS

-TECHNICAL DETAILS-



**sare**<sup>®</sup>  
GLOBAL  
High quality Turkish brand

DATA SHEET

**PTA SERIES**

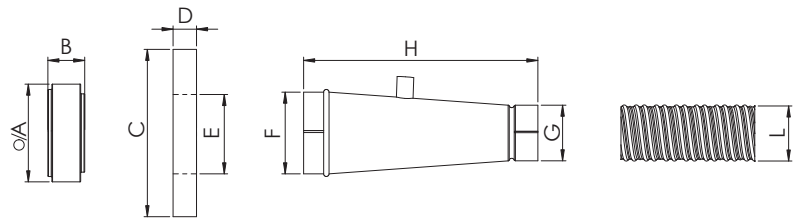
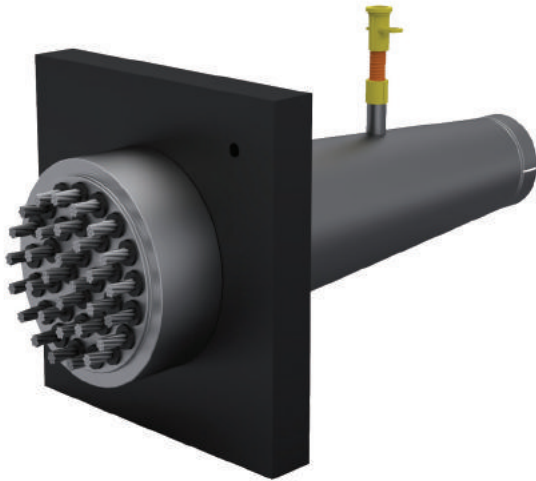
PLATE TYPE






POST-TENSION

SYSTEMS

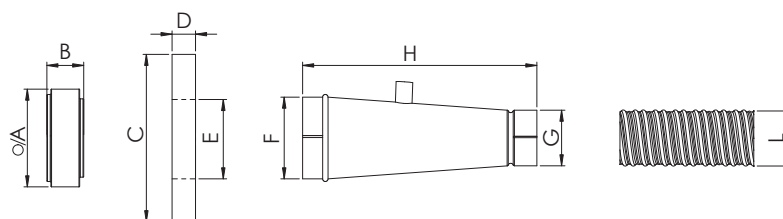


# PTA Series (Plate Type) - Technical Details



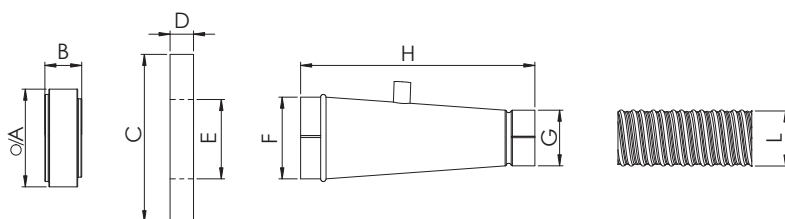
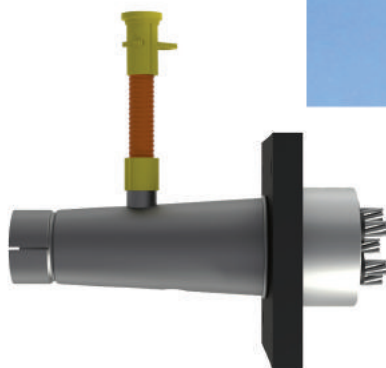
Model No		PTA-3	PTA-4	PTA-5	PTA-6	PTA-7
Number of Strands		3	4	5	6	7
Strands Arrangement						
<b>ANCHOR HEAD</b>						
A	Ø (mm)	100	105	110	120	123
B	(mm)	50	53	55	55	55
<b>ANCHOR PLATE</b>						
C	(mm)	135 x 135	135 x 160	200 x 200	200 x 200	205 x 200
D	(mm)	15	25	25	30	30
E	Ø (mm)	80	85	90	100	100
<b>TRUMPET</b>						
F	Ø (mm)	80	85	90	100	100
G	Ø (mm)	58	58	68	68	68
H	mm	200	200	250	290	290
<b>GALVANIZED DUCT</b>						
L	Ø (mm)	50	50	60	60	60
Internal Dia.	Ø (mm)	45	45	55	55	55

## PTA Series (Plate Type) - Technical Details



Model No		PTA-8	PTA-9	PTA-12	PTA-15	PTA-19
Number of Strands		8	9	12	15	19
Strands Arrangement						
<b>ANCHOR HEAD</b>						
A	Ø (mm)	146	146	157	176	197
B	(mm)	55	55	64	69	73
<b>ANCHOR PLATE</b>						
C	(mm)	250 x 250	250 x 250	270 x 270	300 x 300	340 x 340
D	(mm)	35	35	40	45	50
E	Ø (mm)	122	122	139	153	164
<b>TRUMPET</b>						
F	Ø (mm)	122	122	139	153	164
G	Ø (mm)	83	83	93	103	108
H	mm	350	350	450	450	600
<b>GALVANIZED DUCT</b>						
L	Ø (mm)	75	75	85	95	100
Internal Dia.	Ø (mm)	70	70	80	90	95

# PTA Series (Plate Type) - Technical Details



Model No		PTA-22	PTA-27	PTA-31	PTA-37
Number of Strands		22	27	31	37
Strands Arrangement					
<b>ANCHOR HEAD</b>					
A	Ø (mm)	227	250	266	292
B	(mm)	80	92	105	119
<b>ANCHOR PLATE</b>					
C	(mm)	370 x 370	400 x 400	435 x 435	480 x 480
D	(mm)	55	60	65	75
E	Ø (mm)	197	214	221	235
<b>TRUMPET</b>					
F	Ø (mm)	197	214	221	235
G	Ø (mm)	123	128	133	143
H	mm	650	700	700	830
<b>GALVANIZED DUCT</b>					
L	Ø (mm)	115	120	125	135
Internal Dia.	Ø (mm)	110	115	120	130

## PTA Series - Order Numbers

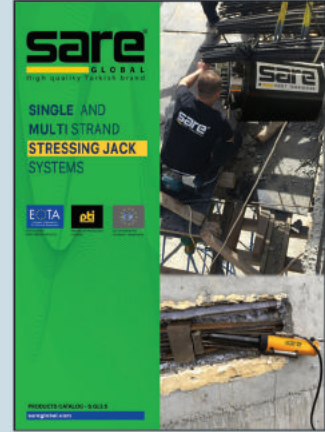
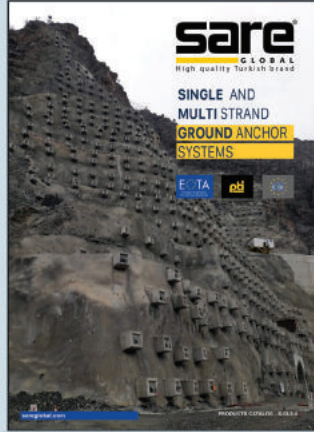
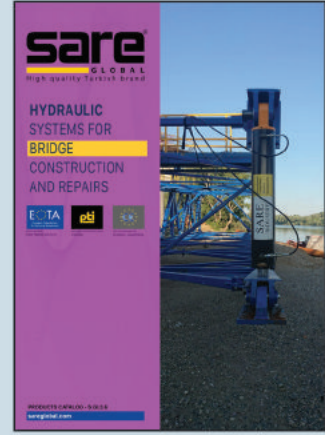
Group Model No.	Product Description		Order Number
<b>PTA-3</b>	3 Strand 855 kN Plate Type Post Tension Set		PTA.03.06062-00
	AH-3A	Anchor Head	AH.60-03.00
	AHP-3A	Anchor Plate	P60-03.00
	GT-3A	Metal Trumpet	GT.60-03.00
	Nu.D-06_0,62W	Wedge	PTW.06.062-00
<b>PTA-4</b>	4 Strand 1140 kN Plate Type Post Tension Set		PTA.04.06062-00
	AH-4A	Anchor Head	AH.60-04.00
	AHP-4A	Anchor Plate	P60-04.00
	GT-4A	Metal Trumpet	GT.60-04.00
	Nu.D-06_0,62W	Wedge	PTW.06.062-00
<b>PTA-5</b>	5 Strand 1425 kN Plate Type Post Tension Set		PTA.05.06062-00
	AH-5A	Anchor Head	AH.60-05.00
	AHP-5A	Anchor Plate	P60-05.00
	GT-5A	Metal Trumpet	GT.60-05.00
	Nu.D-06_0,62W	Wedge	PTW.06.062-00
<b>PTA-6</b>	6 Strand 1710 kN Plate Type Post Tension Set		PTA.06.06062-00
	AH-6A	Anchor Head	AH.60-06.00
	AHP-6A	Anchor Plate	P60-06.00
	GT-6A	Metal Trumpet	GT.60-06.00
	Nu.D-06_0,62W	Wedge	PTW.06.062-00
<b>PTA-7</b>	7 Strand 1995 kN Plate Type Post Tension Set		PTA.07.06062-00
	AH-7A	Anchor Head	AH.60-07.00
	AHP-7A	Anchor Plate	P60-07.00
	GT-7A	Metal Trumpet	GT.60-07.00
	Nu.D-06_0,62W	Wedge	PTW.06.062-00

## PTA Series - Order Numbers

Group Model No.	Product Description		Order Number
<b>PTA-8</b>	8 Strand 2280 kN Plate Type Post Tension Set		PTA.08.06062-00
	AH-8A	Anchor Head	AH.60-08.00
	AHP-8A	Anchor Plate	P60-08.00
	GT-8A	Metal Trumpet	GT.60-08.00
	Nu.D-06_0,62W	Wedge	PTW.06.062-00
<b>PTA-9</b>	9 Strand 2565 kN Plate Type Post Tension Set		PTA.09.06062-00
	AH-9A	Anchor Head	AH.60-09.00
	AHP-9A	Anchor Plate	P60-09.00
	GT-9A	Metal Trumpet	GT.60-09.00
	Nu.D-06_0,62W	Wedge	PTW.06.062-00
<b>PTA-12</b>	12 Strand 3420 kN Plate Type Post Tension Set		PTA.12.06062-00
	AH-12A	Anchor Head	AH.60-12.00
	AHP-12A	Anchor Plate	P60-12.00
	GT-12A	Metal Trumpet	GT.60-12.00
	Nu.D-06_0,62W	Wedge	PTW.06.062-00
<b>PTA-15</b>	15 Strand 4275 kN Plate Type Post Tension Set		PTA.15.06062-00
	AH-15A	Anchor Head	AH.60-15.00
	AHP-15A	Anchor Plate	P60-15.00
	GT-15A	Metal Trumpet	GT.60-15.00
	Nu.D-06_0,62W	Wedge	PTW.06.062-00
<b>PTA-19</b>	19 Strand 5415 kN Plate Type Post Tension Set		PTA.019.06062-00
	AH-19A	Anchor Head	AH.60-19.00
	AHP-19A	Anchor Plate	P60-19.00
	GT-19A	Metal Trumpet	GT.60-19.00
	Nu.D-06_0,62W	Wedge	PTW.06.062-00

## PTA Series - Order Numbers

Group Model No.	Product Description		Order Number
PTA-22	22 Strand 6270 kN Plate Type Post Tension Set		PTA.22.06062-00
	AH-22A	Anchor Head	AH.60-22.00
	AHP-22A	Anchor Plate	P60-22.00
	GT-22A	Metal Trumpet	GT.60-22.00
	Nu.D-06_0,62W	Wedge	PTW.06.062-00
PTA-27	27 Strand 7695 kN Plate Type Post Tension Set		PTA.27.06062-00
	AH-27A	Anchor Head	AH.60-27.00
	AHP-27A	Anchor Plate	P60-27.00
	GT-27A	Metal Trumpet	GT.60-27.00
	Nu.D-06_0,62W	Wedge	PTW.06.062-00
PTA-31	31 Strand 8835 kN Plate Type Post Tension Set		PTA.31.06062-00
	AH-31A	Anchor Head	AH.60-31.00
	AHP-31A	Anchor Plate	P60-31.00
	GT-31A	Metal Trumpet	GT.60-31.00
	Nu.D-06_0,62W	Wedge	PTW.06.062-00
PTA-37	37 Strand 10545 kN Plate Type Post Tension Set		PTA.37.06062-00
	AH-37A	Anchor Head	AH.60-37.00
	AHP-37A	Anchor Plate	P60-37.00
	GT-37A	Metal Trumpet	GT.60-37.00
	Nu.D-06_0,62W	Wedge	PTW.06.062-00



**sare**<sup>®</sup>  
GLOBAL  
High Quality Turkish Brand

Merkez Mah. Çavuşbaşı Cad. No.42 D.5-8 Çekmeköy 34782 İstanbul - Türkiye  
P: +90 216 313 11 13 pbx  
info@sareglobal.com • www.sareglobal.com

