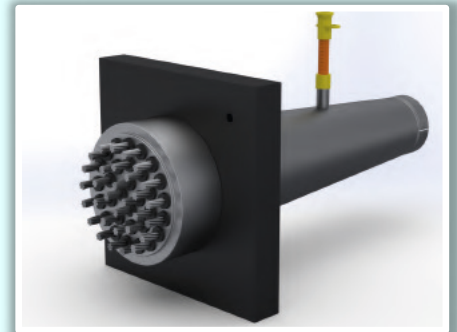
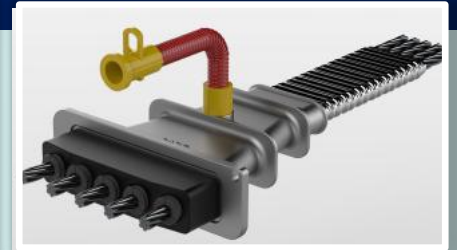


SARE GLOBAL POSTTENSION SYSTEMS

-TECHNICAL DETAILS-



sare[®]
GLOBAL
High quality Turkish brand

DATA
SHEET



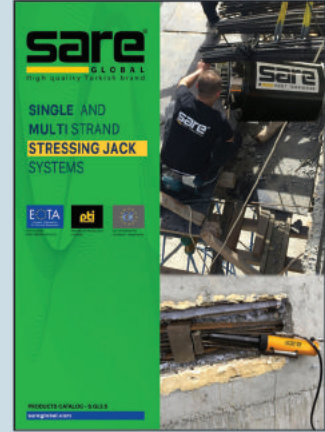
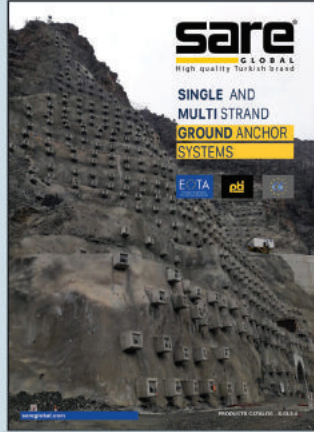
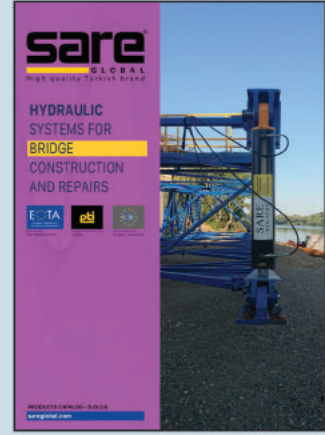
**SR-I Series
Injection
Pump**



SR-I Series - Injection Pump



Item		Data
Dimensions	cm	300x90x165
Gross Weight	kg	580
Rotor Type	P3	P8
Theoretical Pump Capacity	Lt/min	70
Maximum Output Pressure	bar	40
Out Hose Diameter	inch	1
Max. Send Mess. Vertical	m	80
Max. Send Mess. Horizontal Max.	m	100
Main Engine Power	kw	7,5
Mixer Motor Power	kw	3x2
Voltage / Frequency	v/hz	380/50
Total Consumption	kw	13,5
Rotor Rotation Speed	rpm	407
Mixer Rotation Speed	rpm	55
Boiler Volume	litre	200x2



sare[®]
GLOBAL
High Quality Turkish Brand

Merkez Mah. Çavuşbaşı Cad. No.42 D.5-8 Çekmeköy 34782 İstanbul - Türkiye
P: +90 216 313 11 13 pbx
info@sareglobal.com • www.sareglobal.com

