

**Sare**<sup>®</sup>  
GLOBAL  
High quality Turkish brand

# DATA SHEET



**Short  
Stroke**

**SAS Series**

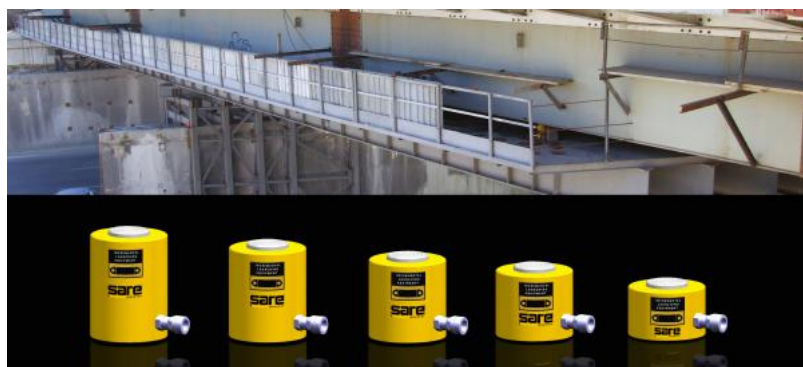
Single acting  
Load return  
30-200 ton capacity  
50-100 mm stroke  
Totally 18 models



**HYDRAULIC  
SYSTEMS FOR  
BRIDGE  
CONSTRUCTION  
AND  
REPAIRS**

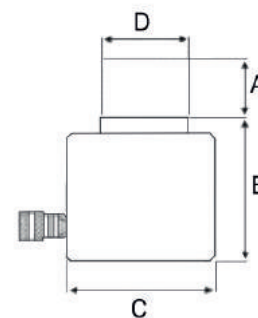
**SAS Series**



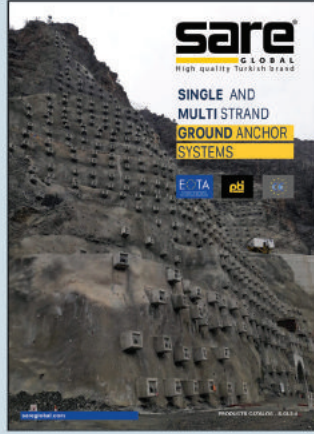
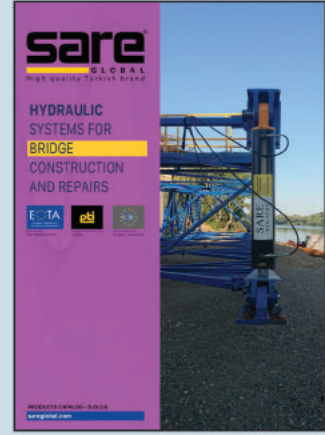


## SAS Series

Single acting, short stroke  
Load return  
30 - 200 ton capacity  
50 - 100 mm stroke  
Totally 18 models  
700 bar maximum operating pressure



Model No.	Capacity ton	A	B	C	D	Effective Area cm <sup>2</sup>	Oil Capacity cm <sup>3</sup>	Weight kg
		Stroke mm	Closed Height mm	Outside Diameter mm	Rod Diameter mm			
SAS-305	30	50	125	112	65	44,18	221	9,7
SAS-308		75	150					
SAS-3010		100	175					
SAS-505	50	50	125	138	85	70,88	355	14,5
SAS-508		75	150					
SAS-5010		100	175					
SAS-755	75	50	130	158	105	103,87	520	19,5
SAS-758		75	155					
SAS-7510		100	180					
SAS-1005	100	50	135	185	125	143,14	716	28,0
SAS-1008		75	160					
SAS-10010		100	185					
SAS-1505	150	50	142	218	150	213,82	1069	40,5
SAS-1508		75	167					
SAS-15010		100	192					
SAS-2005	200	50	150	248	175	283,53	1418	55,5
SAS-2008		75	175					
SAS-20010		100	200					



**sare**<sup>®</sup>  
GLOBAL  
High Quality Turkish Brand

Merkez Mah. Çavuşbaşı Cad. No.42 D.5-8 Çekmeköy 34782 İstanbul - Türkiye  
P: +90 216 313 11 13 pbx  
info@sareglobal.com • www.sareglobal.com

